

A woman with dark hair styled in a braid is standing in a lush garden. She is wearing a black, long-sleeved, floor-length dress with intricate floral embroidery in shades of pink, purple, and green. The dress features a detailed silver or white lace-like pattern around the neckline and on the sleeves. She is holding a matching shawl or dupatta with a similar floral pattern. The background shows a well-maintained lawn, green hedges, and a building with classical architectural elements like columns and arches. The lighting is soft, suggesting late afternoon or early morning.

*Mesmerizing*  
**Hues**

Clothes aren't going to  
change the world,  
the women who  
wear them will.

988-007



# Startling *panache*

Choosing right clothes is very simple; you just need to be versatile.







Flaunt  
Fashion is a trend.  
Style lives within a person.  
*Your*  
STYLE





Style  
**ZONE**

Head to Story of tradition and cherish the  
ecstatic collection by Belliza.



988-005



Indulge *in*  
elegance

Fashion has to reflect who you are, what you feel at the moment, and where you're going.





Indulge *in*  
elegance

Fashion has to reflect who you are, what you feel at the moment, and where you're going.



988-006







# Dilshad

Vol-6



988-001



988-002



988-003



988-004



988-005



988-006



988-007



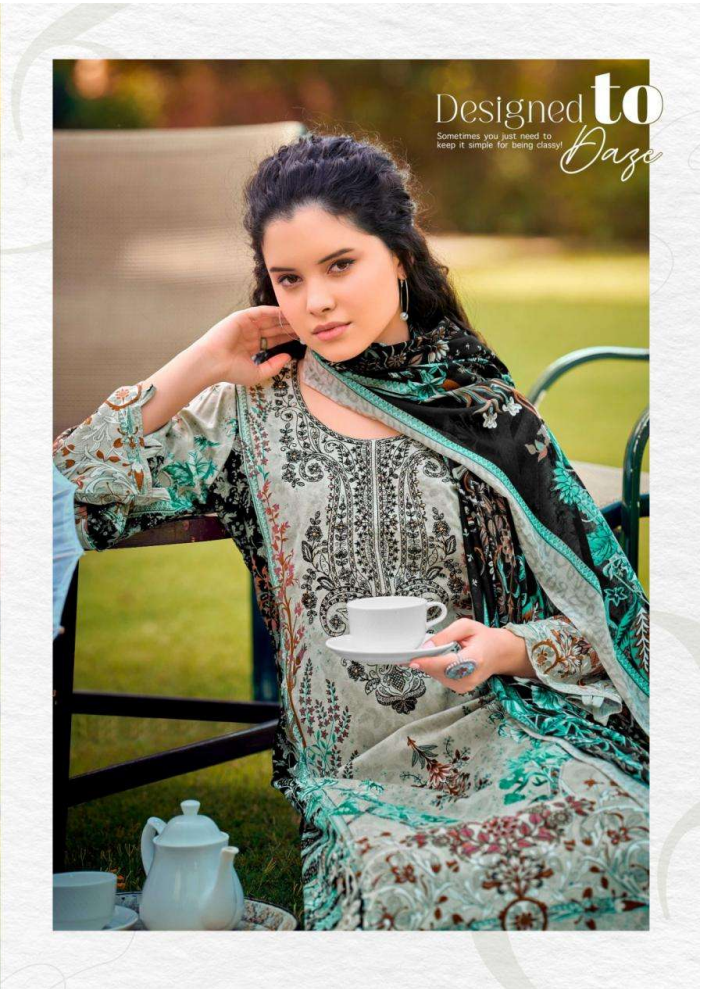
988-008



Flawless

Fashion is a trend.  
Style lives within a person.

Work  
DETAILS





# Elegance

Elegance is a statement,  
an attitude. Elegant women  
are women of personality  
with confidence.





988-003



Startling

Panache

Choosing right clothes is very simple; you just need to be versatile.