



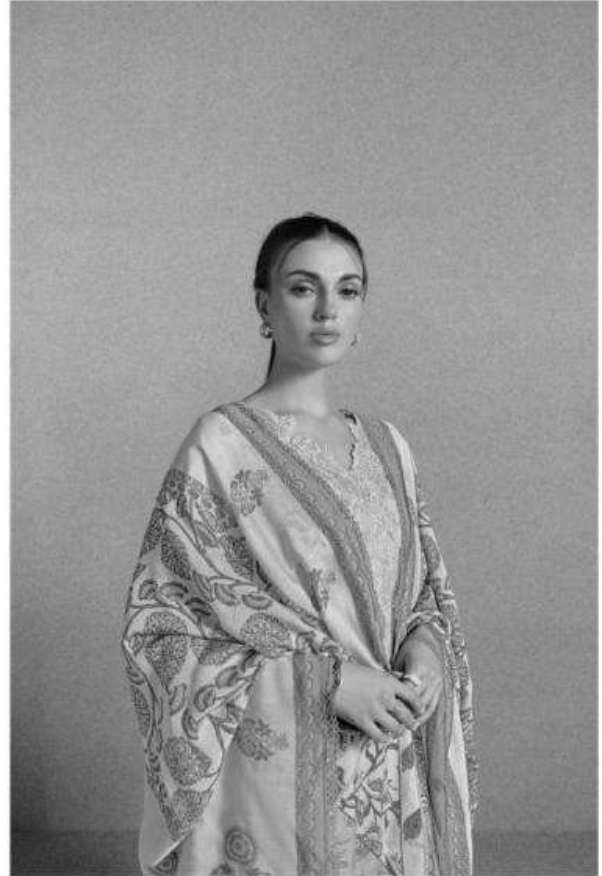




## **POWER DRESSING - 761**

*Power dressing transcends mere fashion; it's a statement of ambition, strength, and authority. In every sharp suit, tailored blazer, and sleek silhouette, there's an embodiment of confidence and professionalism. It's not just about what you wear, but how you wear it—with conviction, making every entrance a declaration of presence and purpose.*

KIMORA'S  
**Sohai**







KIMORA'S  
**Sohrai**



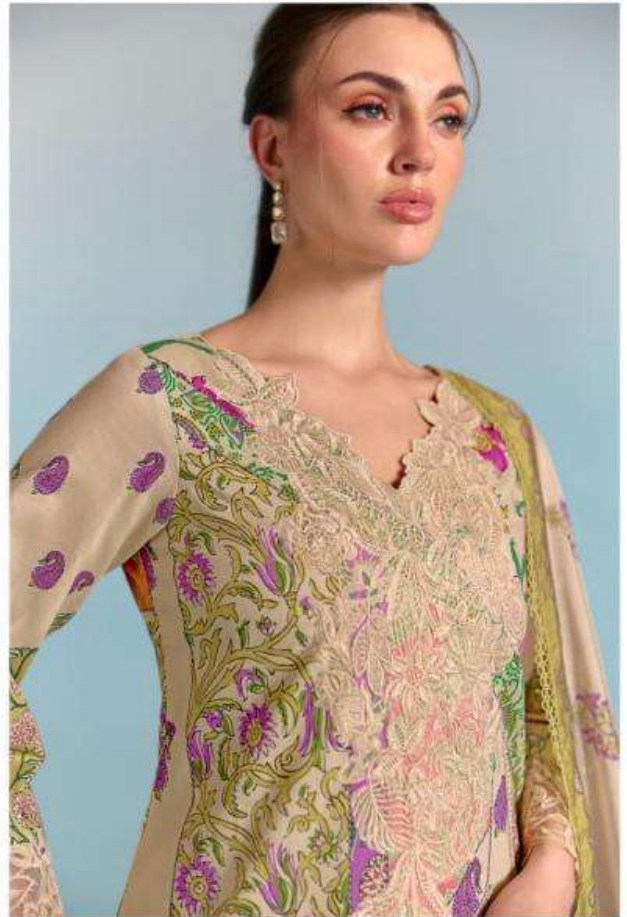


KINODAI'S  
**Sohai**

## ECLECTIC ELEGANCE - 762

*Eclectic elegance is the art of mixing and matching seemingly disparate elements to create a harmonious ensemble. It's a bold exploration of texture, color, and form, where personal style breaks free from conventional boundaries. This approach celebrates the individual's creativity, crafting outfits that are as unique and multifaceted as the people wearing them.*







KIMODAI'S  
**Sohai**



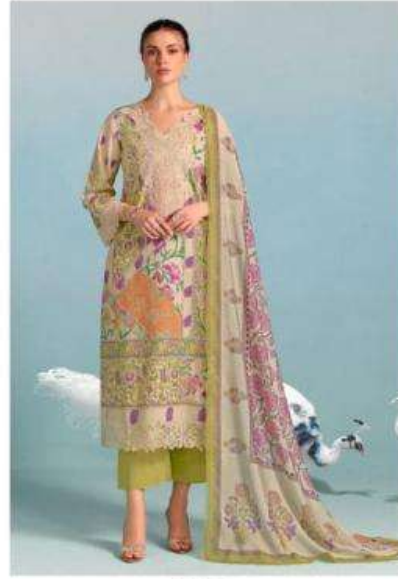
### **GLAMOUR UNLEASHED - 763**

*Glamour is not reserved for the red carpet; it's an everyday possibility. With each glittering accessory, luxurious fabric, and dramatic silhouette, glamour brings a touch of magic to the mundane. It's about embracing one's desires to feel extraordinary, turning ordinary days into occasions worth celebrating.*

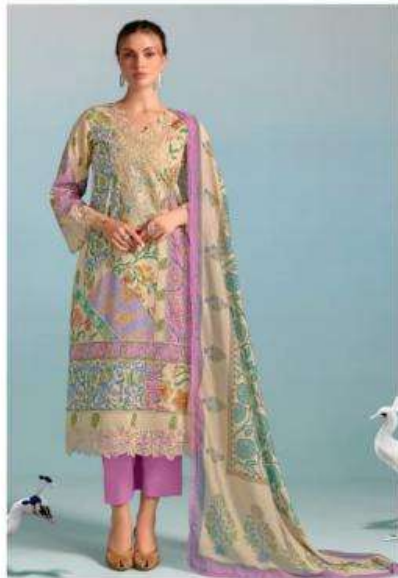




761



762



763



764

ALHORA'S  
**Sohai**









## CULTURAL TAPESTRY - 764

*Fashion as a cultural tapestry weaves together the rich patterns, colors, and textures of diverse traditions. It's a celebration of global heritage, a visual dialogue between different ways of life. By embracing fashion influenced by various cultures, wearers can express a deep appreciation for the world's vast beauty and complexity.*

XIMORA'S  
**Sohni**



ALMORAZ  
Sohai



