

Ganga[®]

S4729-A





S4729-A



S4729-B



S4729-C



S4729-D

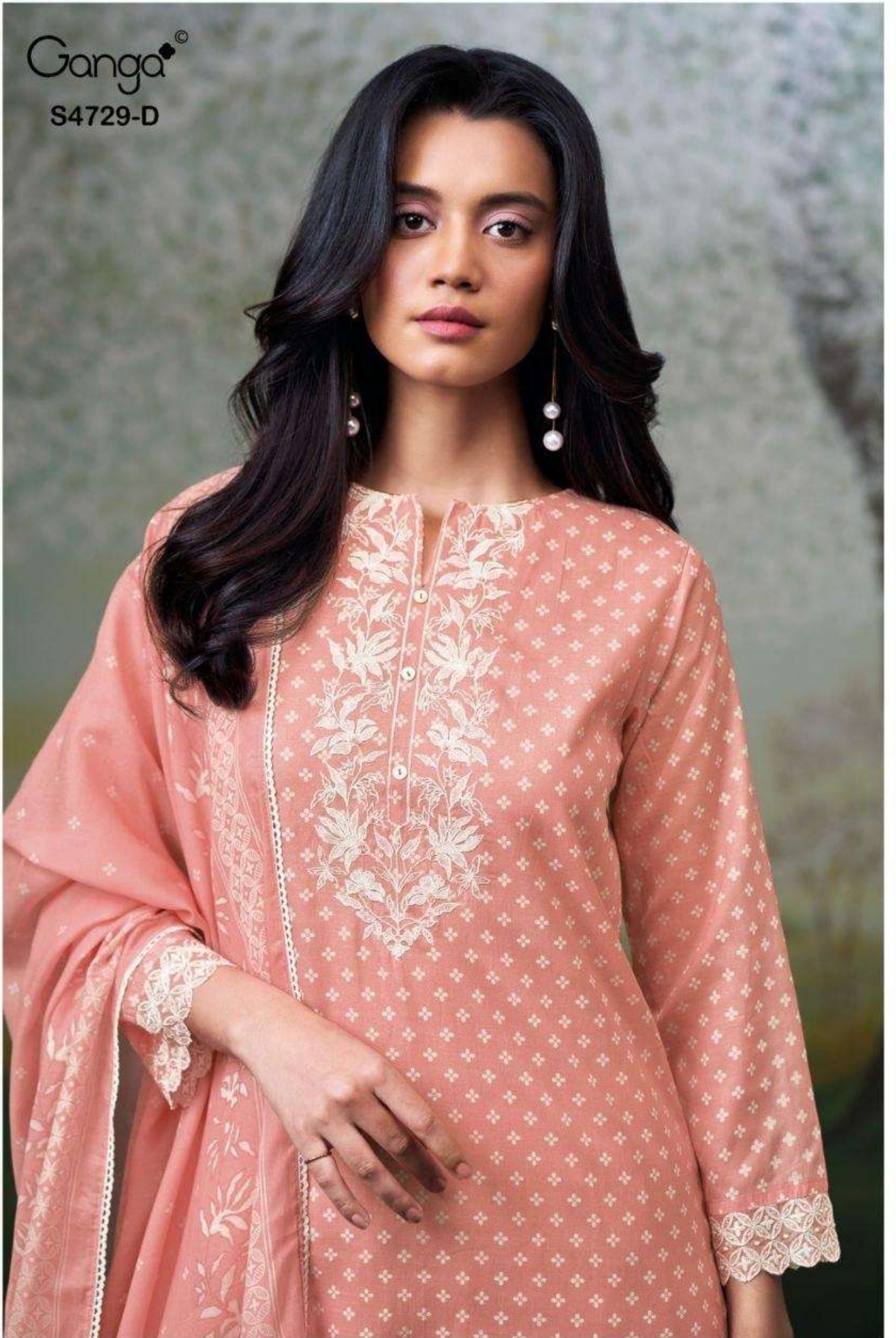
Ganga®
Kynza
S4729- A/B/C/D

Ganga[®]
S4729-C



Ganga[®]

S4729-D



Ganga[®]

S4729-B



Ganga[®]

S4729-A



Ganga[®]

S4729-B



Ganga[®]

S4729-C



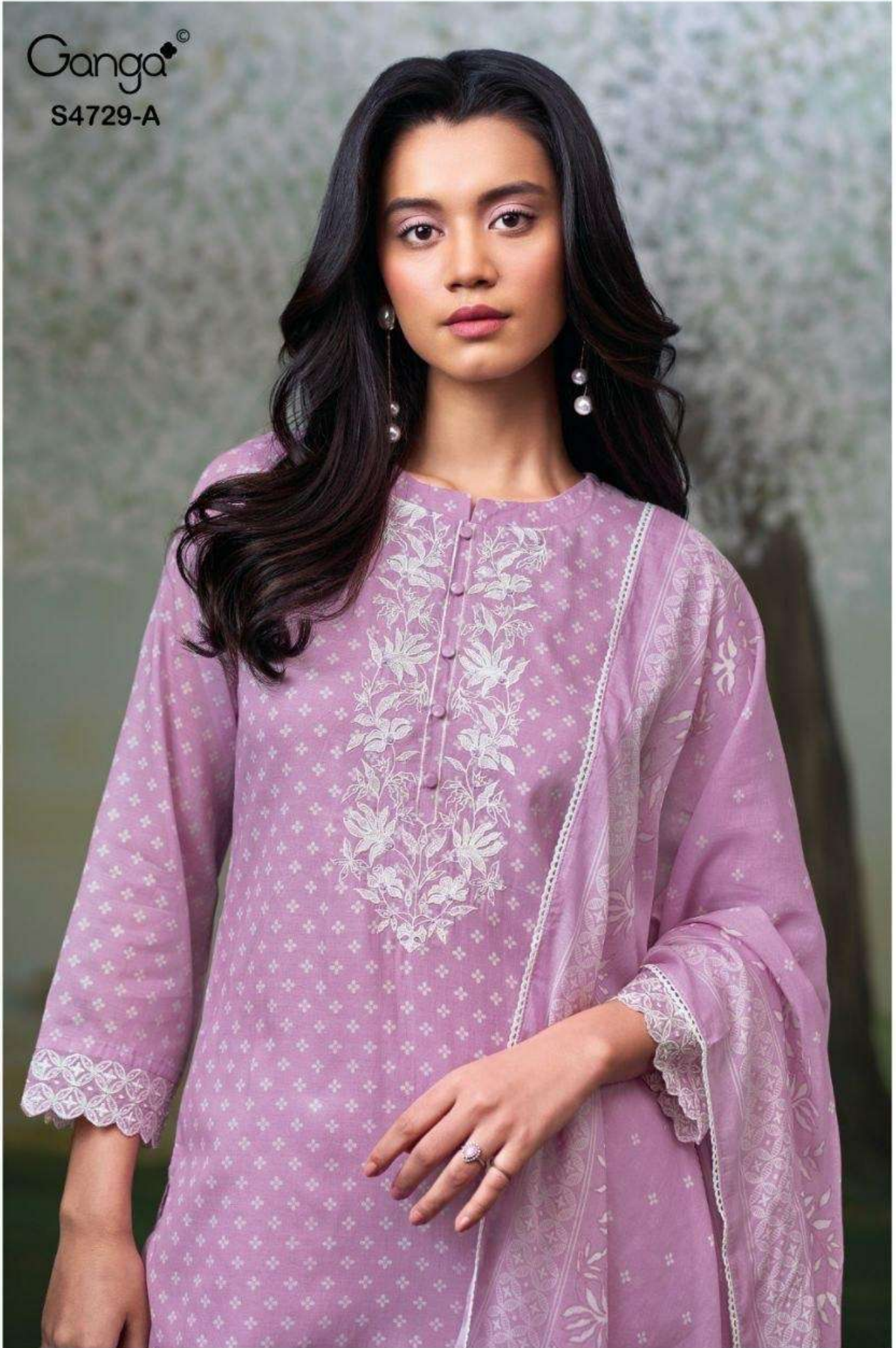
Ganga[®]

S4729-D



Ganga[®]

S4729-A



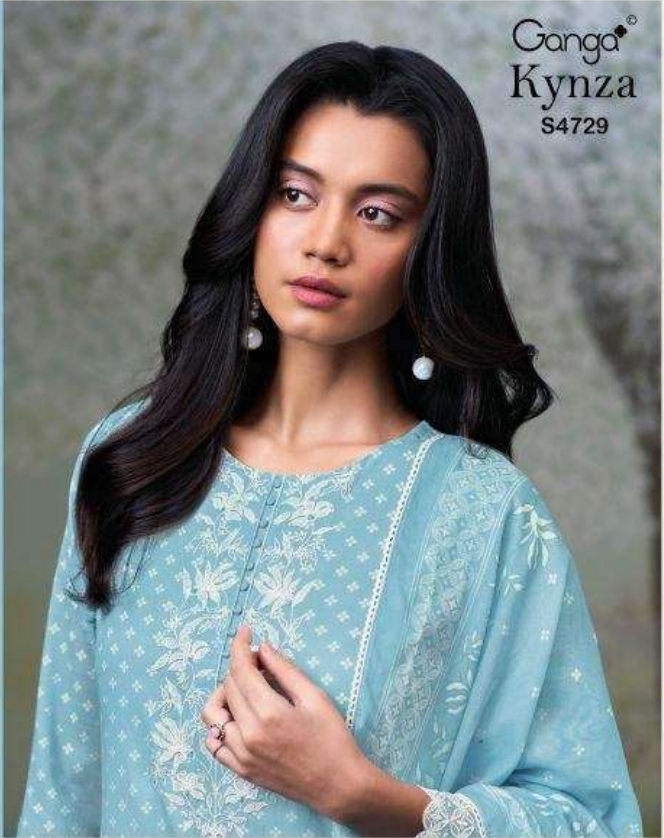
Ganga[®]
Kynza
S4729



Ganga®

Ganga®
Kynza
S4729

Kynza
S4729



—DESCRIPTION—

~TOP~

PREMIUM PURE BEMBERG MUL PRINTED WITH EMBROIDERY ON NECK & HAND WORK, EMBROIDERY LACE ON SLEEVES, CROCHET LACE ON DAMAN.

~BOTTOM~

PREMIUM COTTON SOLID COLOR

~DUPATTA~

PREMIUM PURE BEMBERG MUL PRINTED WITH CROCHET LACE BORDER.