









Saniya  
TRENDZ



H - 28002

TOP: COTTON WITH HEAVY EMBROIDERY  
SHAWL: COTTON WITH HEAVY EMBROIDERY  
BOTTOMWEAR: COTTON  
BANDS: COTTON WITH BUSTLE PRINT

Saniya  
TRENDZ

Saniya TRENDZ



H - 28003

TOP:- COTTON WITH HEAVY EMBROIDERY  
CHIRKARRI WORK  
BOTTOMWEAR:- COTTON  
DUPATTA:- COTTON WITH DIGITAL PRINT





28001



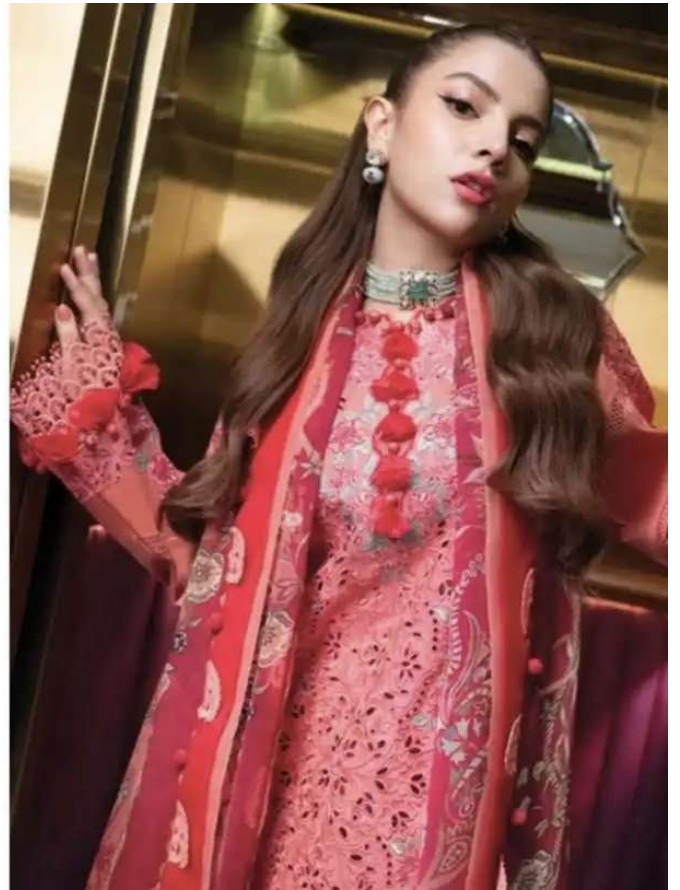
28002



28003



28004









28001

