



From earthy tones to vibrant shades,  
Each fabric tells of skills that  
never fade. A modern touch to  
a classic weave. A perfect blend  
of style and belief.



Shree®  
FABS



D.No-107

"Wear a Story. Weave a Dream"



**D.No-108**

"The Soul of India in Every Fabric"





Shree®  
FABS

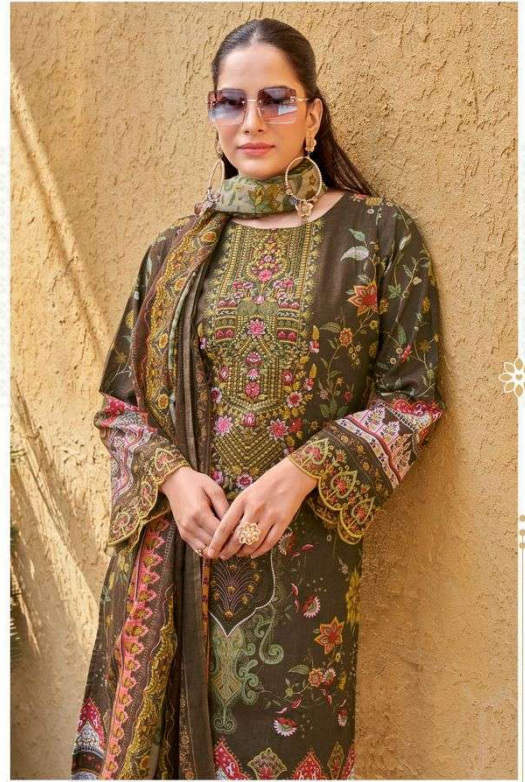


D.No-103

"Wear a Story. Weave a Dream"



From earthy tones to vibrant shades,  
Each fabric tells of skills that  
never fade. A modern touch to  
a classic weave. A perfect blend  
of style and belief.



D.No-106



# ETHNIC ELEGANCE

"From the Hands of Weavers, to the Hearts of Women"



• D.No-104



"FABRIK ELEGANCE: ETHNIC CHARM"



**Shree**<sup>®</sup>  
FABS



**D.No-101**

"Wear a Story. Weave a Dream"





"Ethnic Look - Modern Aisire"



Shree®  
FABS



GRACE THAT  
*Blossoms*  
IN EVERY DRAPE



00-101



00-102



00-103



00-107



00-108



00-104



00-105



00-106



**KHADIZA**  
 Premium Lawn Collection خدیجہ



D.No-102





D.No-107

"Where Fashion Dances with Tradition"





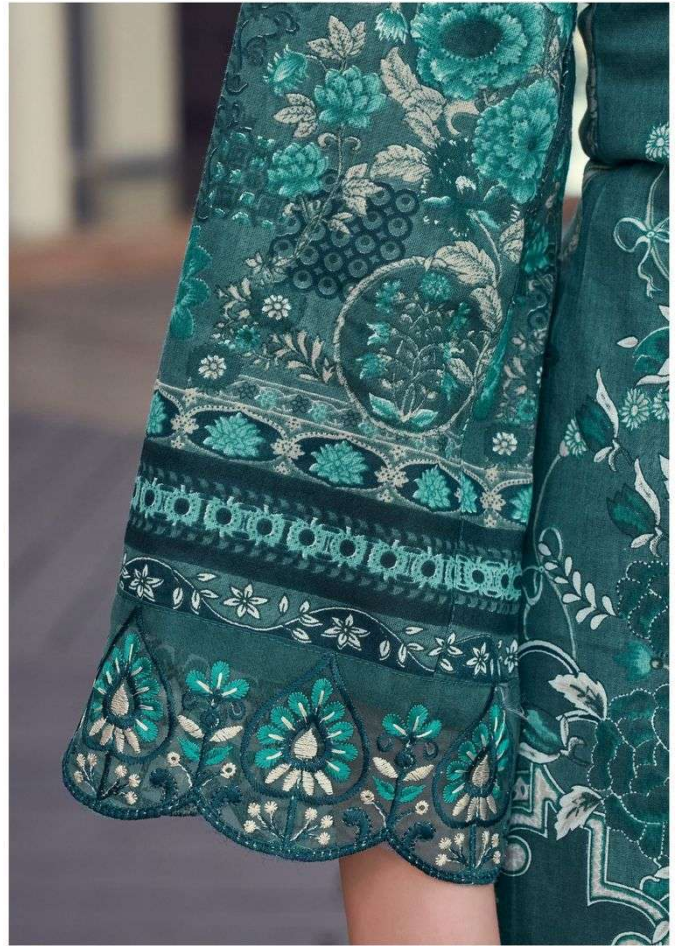
shree®  
FABS

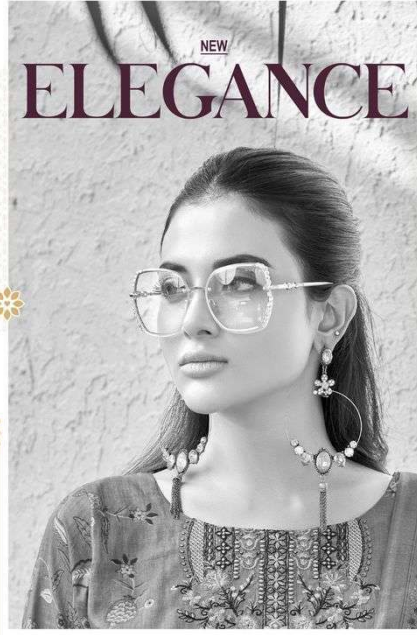
D.No-105

"From the Hands of Weavers, to the Hearts of Women"



BECAUSE I AM  
**FABULOUS**





NEW  
**ELEGANCE**

**D.No-107**

"Where Fashion Dances with Tradition"

