





IBADAAT | 24001



IBADAAT | 24002



IBADAAT | 24003



IBADAAT | 24007



IBADAAT | 24008



IBADAAT | 24004



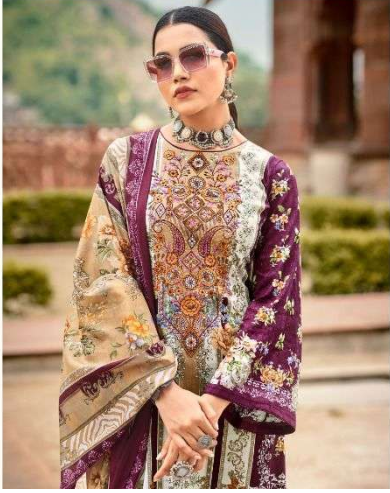
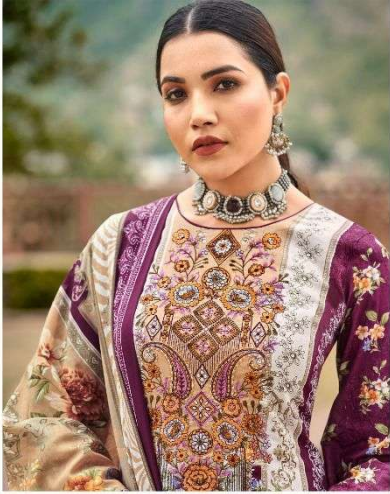
IBADAAT | 24005



IBADAAT | 24006



ریاض آرٹس  
RIAZ ARTS®  
The Luxury Lane  
IBADAAT



ریاض آرٹس

**RIAZ ARTS**  
*The Legacy Lives*

IBADAAT | 24006



ریاض آرٹس  
RIAZ ARTS®  
*The Luxury Lane*

NAAYAB  
SHE IS RARE.  
\*\*\*\*\*



IBADAAT | 24008



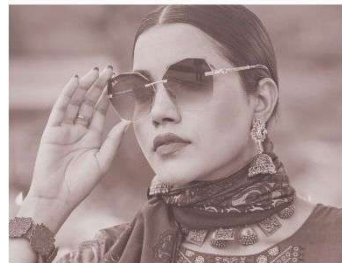


ریاض آرٹس  
**RIAZ ARTS**  
*The Luxury Lane*

**IBADAAT**

THE TRENDIEST SHOWCASE

WHEN YOU SEE THIS DRESS, BE ASSURED,  
IT WOULD BE THE PERFECT STATEMENT PIECE IN THE LOOK BOOK.



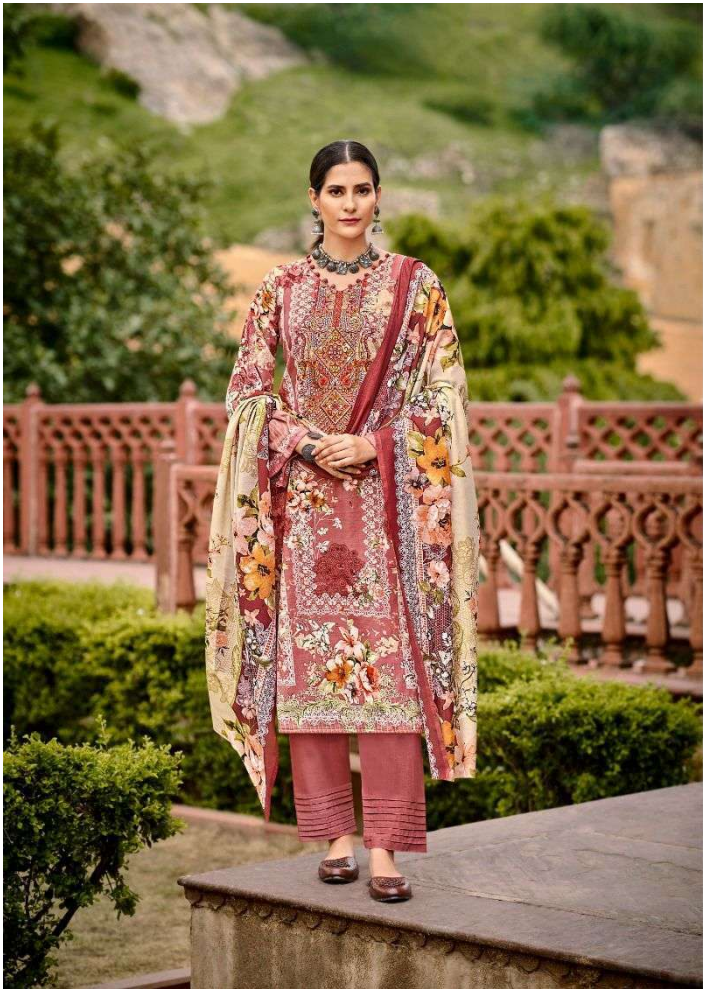


MANNAT  
SHE IS FULL OF WISHES AND DREAMS!

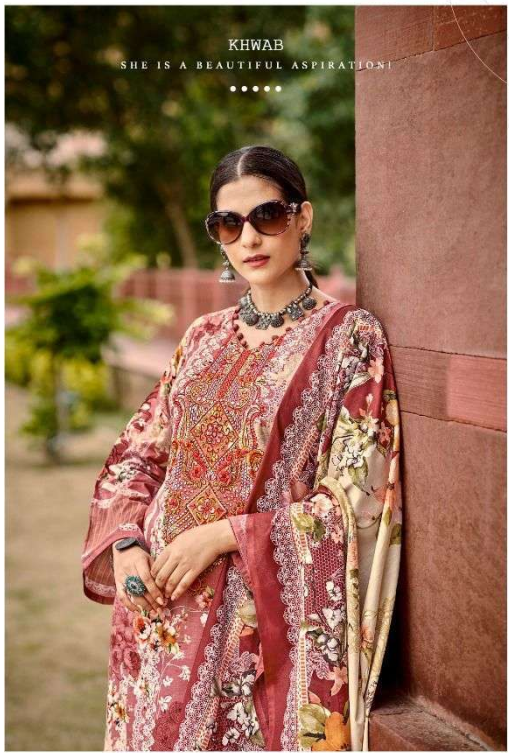
IBADAAT | 24003

ریاض آرٹس  
**RIAZ ARTS**  
*The Luxury Lane*



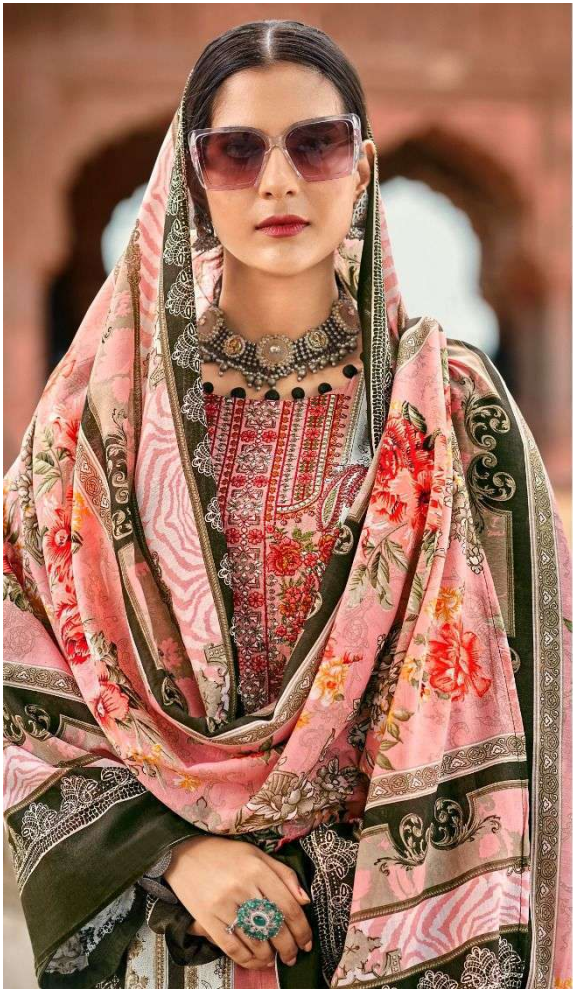


ریاض آرٹس  
**RIAZ ARTS**  
*The Legacy Lives*

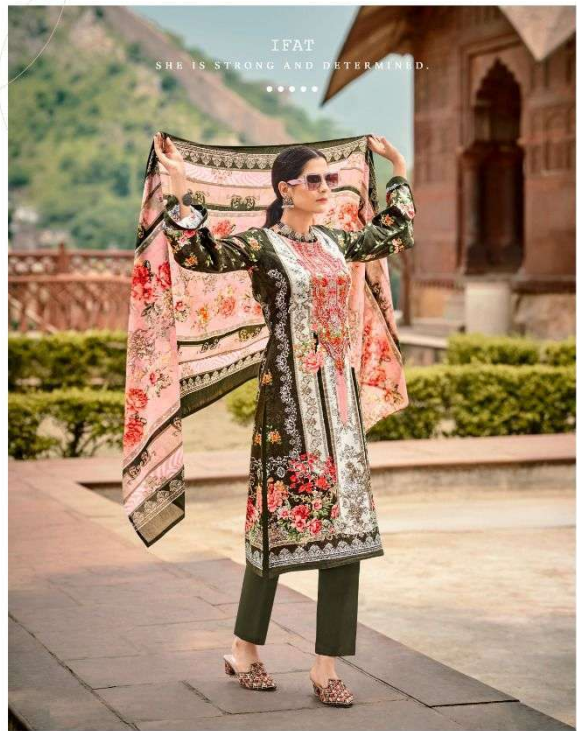


KHWAB  
SHE IS A BEAUTIFUL ASPIRATION

IBADAAT | 24001



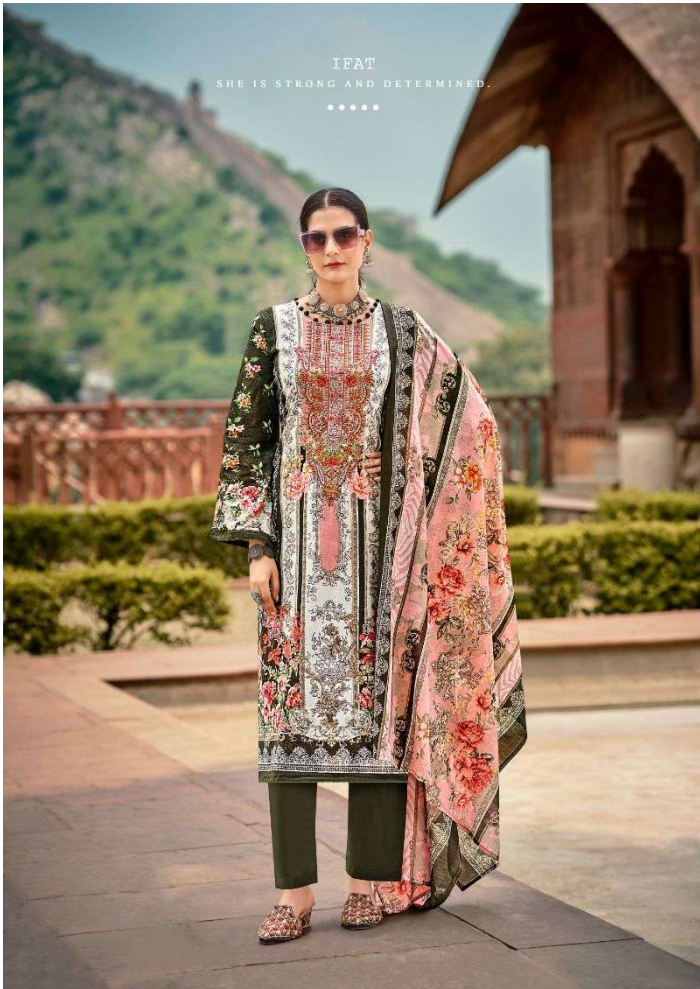
ریاض آرٹس  
**RIAZ ARTS**  
*The Legacy Lives*



IFAT  
SHE IS STRONG AND DETERMINED.  
\*\*\*\*\*

IBADAAT | 24005





ریاض آرٹس  
RIAZ ARTS®  
The Luxury Line



IBADAAT | 24005





ریاض آرٹس  
**RIAZ ARTS**  
*The Luxury Lane*  
IBADAAT | 24007





ریاض آرٹس

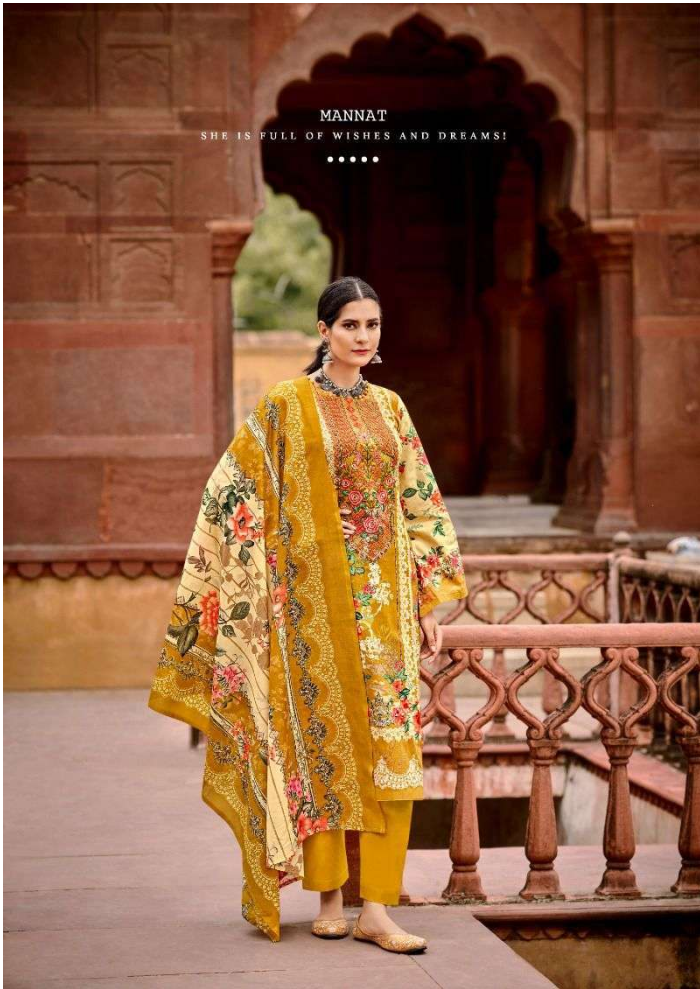
**RIAZ ARTS**  
*The Legacy Lives*

SEHER  
SHE IS MORNING SUNSHINE.  
•••••



IBADAAT | 24004





MANNAT  
SHE IS FULL OF WISHES AND DREAMS!  
.....

ریاض آرٹس  
RIAZ ARTS®  
The Legacy Lane



IBADAAT | 24003



ریاض آرٹس  
RIAZ ARTS®  
*The Legacy Lives*

### IBADAAT

If you happen to be a woman who is experimental, elegant and love to try out different styles of fashion consciousness, then label Mumtaz is ideally what you need to explore right away. With meticulous embroidery that has been paired with feminine silhouettes and opulent palettes, this new volume by Mumtaz speaks for an amalgamation of its-kind that is here to create the ultimate wardrobe with both contemporary and time-honored styles that spell brilliance.

•••••



NOOR  
SHE SHINES BRIGHT LIKE MOON.



IBADAAT | 24002

ریاض آرٹس  
RIAZ ARTS®  
The Legacy Lane

