

A woman is the central figure, wearing a vibrant green and yellow Banarasi silk saree with intricate gold and green patterns. She is standing in a room with large windows, heavy brown curtains, and a floor covered in various flowers, including pink orchids and white roses. The lighting is soft and elegant.

Raj path™

PURE SOFT
BANARASI SILK

780004



780001



780002



780003



780004















780005



780006



780007



780008



Raj path™
PURE SOFT
BANARASI SILK
780004

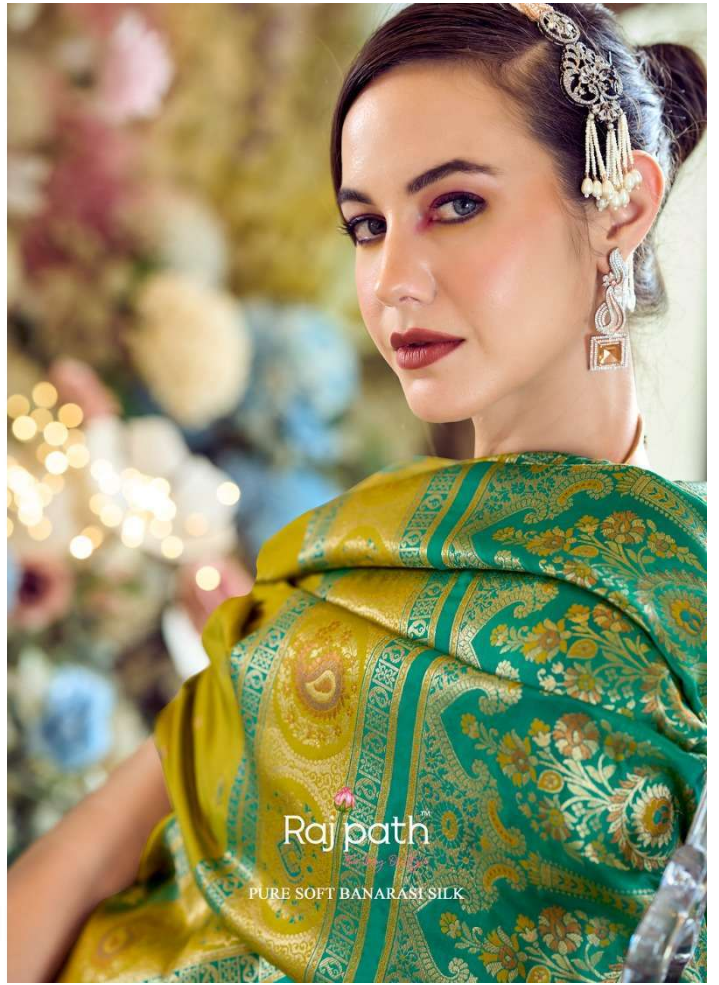


Raj path

PURE SOFT
BANARASI SILK
780007











Rajpath
PURE SOFT
BANARASI SILK
780001





Rajpath
PURE SOFT
BANARASI SILK
780001