

अनंतेश®
Lifestyle

15003



anantesh[®]
Lifestyle

15003



WOMEN IN BLACK

Anantesh[®]
Lifestyle



15001



15002



15003

Anantesh[®]
Lifestyle



anantesh®
Lifestyle
15002





Anantesh®
Lifestyle

Effortlessly ethereal

15001



अनंतेश®
Lifestyle

15003





Heritage hues hit different



15002

anantesh[®]
Lifestyle

15002



anantesh®
Lifestyle

Sassy lass in classy attire



15002

Anantesh[®]
Lifestyle
15002



अनंतेश®
Lifestyle



अनंतेश®
Lifestyle



15001



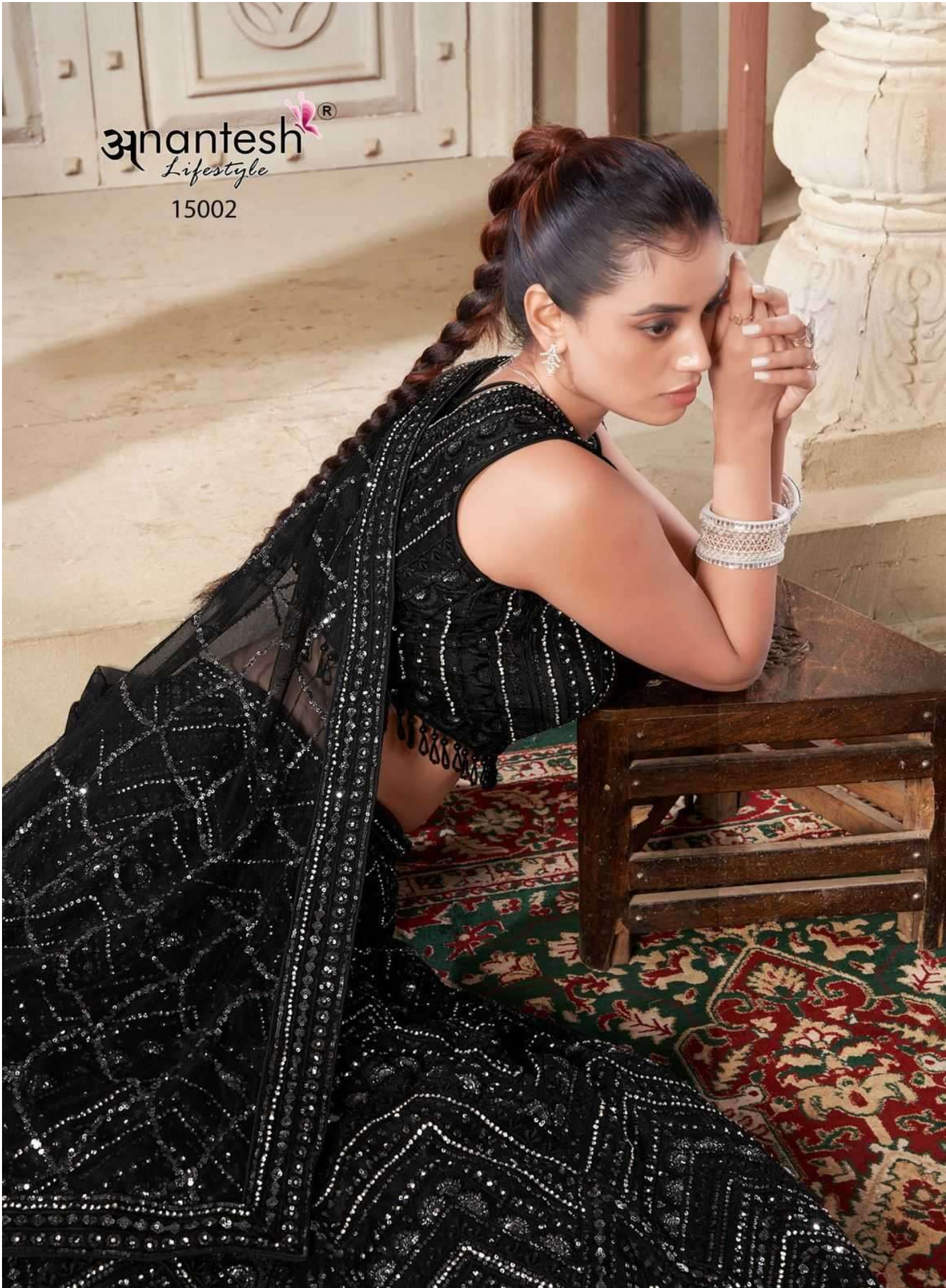
15002



15003

Anantesh[®]
Lifestyle

15002



Anantesh®
Lifestyle



15003

EMBROIDERED INDIAN SHARARA CHOLI IS INDISPUTABLY ADMIRERED AROUND THE GLOBE. IT IS ONE OF THE MOST FAVORITE OF INDIAN FASHION. FROM DEVELOPING THE TRENDS OF TRIBAL AND SOBRADO AS WELL AS ROYAL PEOPLE OF OLDER TIMES. EVEN IN THE PRESENT DAY, THE TRADITIONAL IDEAS FOR WOMEN IN RAJASTHAN AND GUJARAT IS THE LEBENSA CHOLI OR SHARARA CHOLI.



Anantesh
Lifestyle

15003

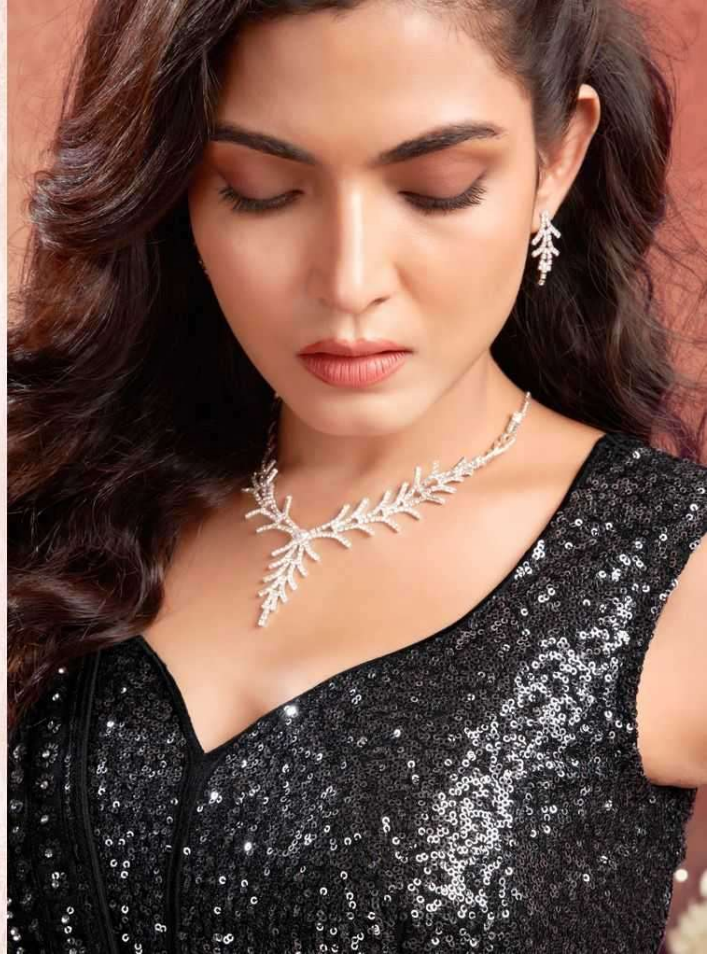


anantesh®
Lifestyle




FABRICATED IN THE SHARDA CHHETI IS
INDISSET ADMIRER BEYOND THE GLOBE.
IT IS ONE OF THE OLDEST FORMS OF
INDIAN LEHNGA CLOTH DEVELOPED
THE TIMES OF TRIPRA AND SOMWAS AS
WELL AS RYAL PEOPLE OF GURJIN
INDIA. EVEN IN THE PRESENT DAY, THE
TRADITIONAL DRESS FOR WOMEN IN RA-
JASTHAN AND GUJARAT IS THE LEHNGA
CHHETI OR SHARDA CHHETI

15003



anantesh[®]
Lifestyle
15002



Swirling in my timeless elegance



15001



Anantesh[®]
Lifestyle

15003



