



CHANTELLE
Vol-11

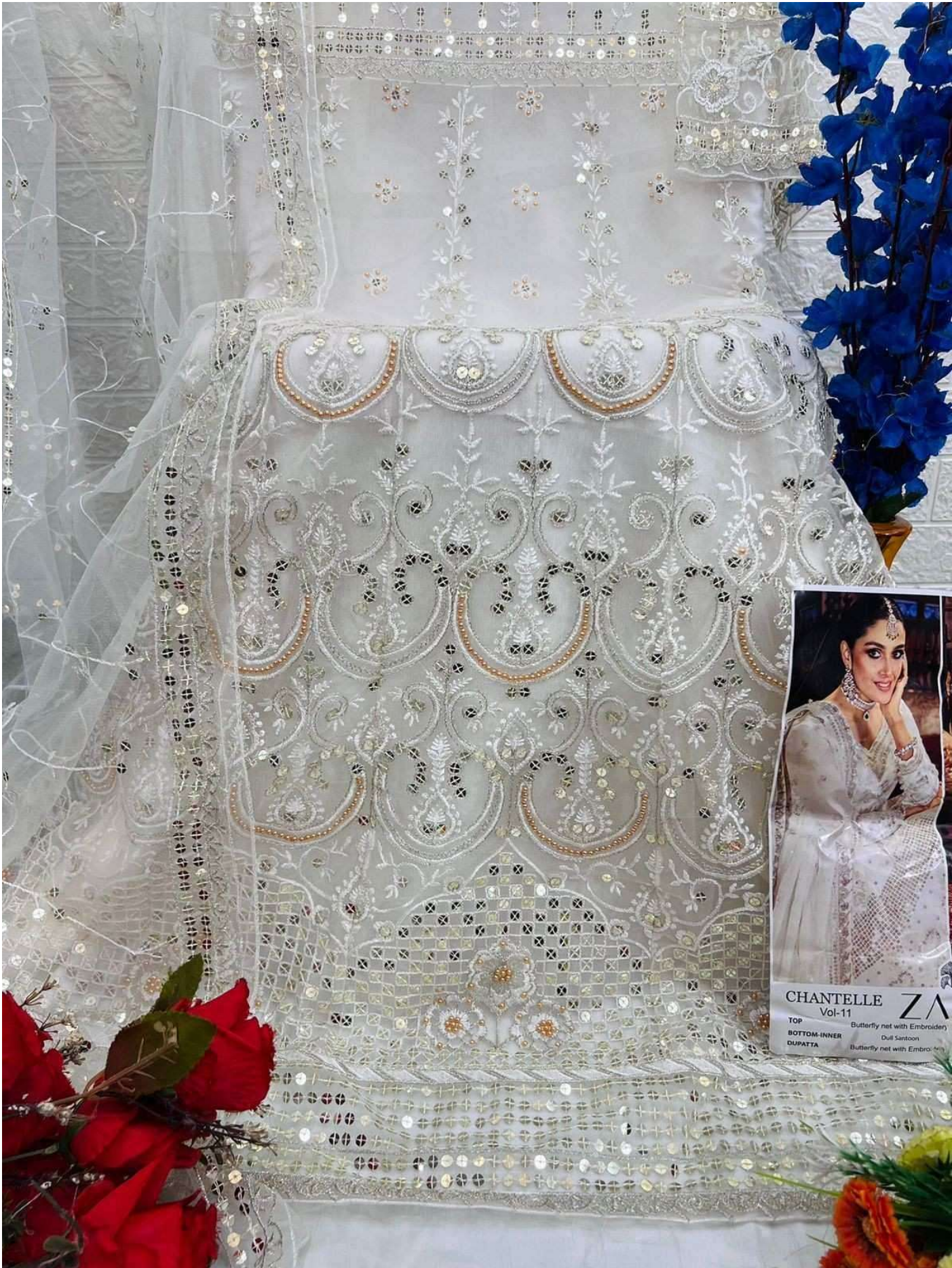
ZAHA

D.No.10359-A

TOP Butterfly net with Embroidery
BOTTOM-INNER Dull Santoon
DUPATTA Butterfly net with Embroidery

CARE INSTRUCTIONS

- Ⓟ Dry clean only
- ⚠ Do not use any bleach or stain removing chemical
- ☎ Iron the fabric at moderate temperature
- ⊗ Do not dry fabric in direct sunlight



CHANTELLE ZA
Vol-11
TOP Butterfly net with Embroidery
BOTTOM-INNER Dull Santoon
DUPATTA Butterfly net with Embroidery



CHANTELLE
Vol-11

ZAHA

D.No.10359-A

TOP Butterfly net with Embroidery
BOTTOM-INNER Dull Santoon
DUPATTA Butterfly net with Embroidery

CARE INSTRUCTIONS

- Ⓟ Dry clean only
- ⚠ Do not use any bleach or stain removing chemical
- ☐ Iron the fabric at moderate temperature
- ⊗ Do not dry fabric in direct sunlight

CHANTELLE

VOL-11

TOP Butterfly Net with Embroidery **BOTTOM-INNER**



10359-A

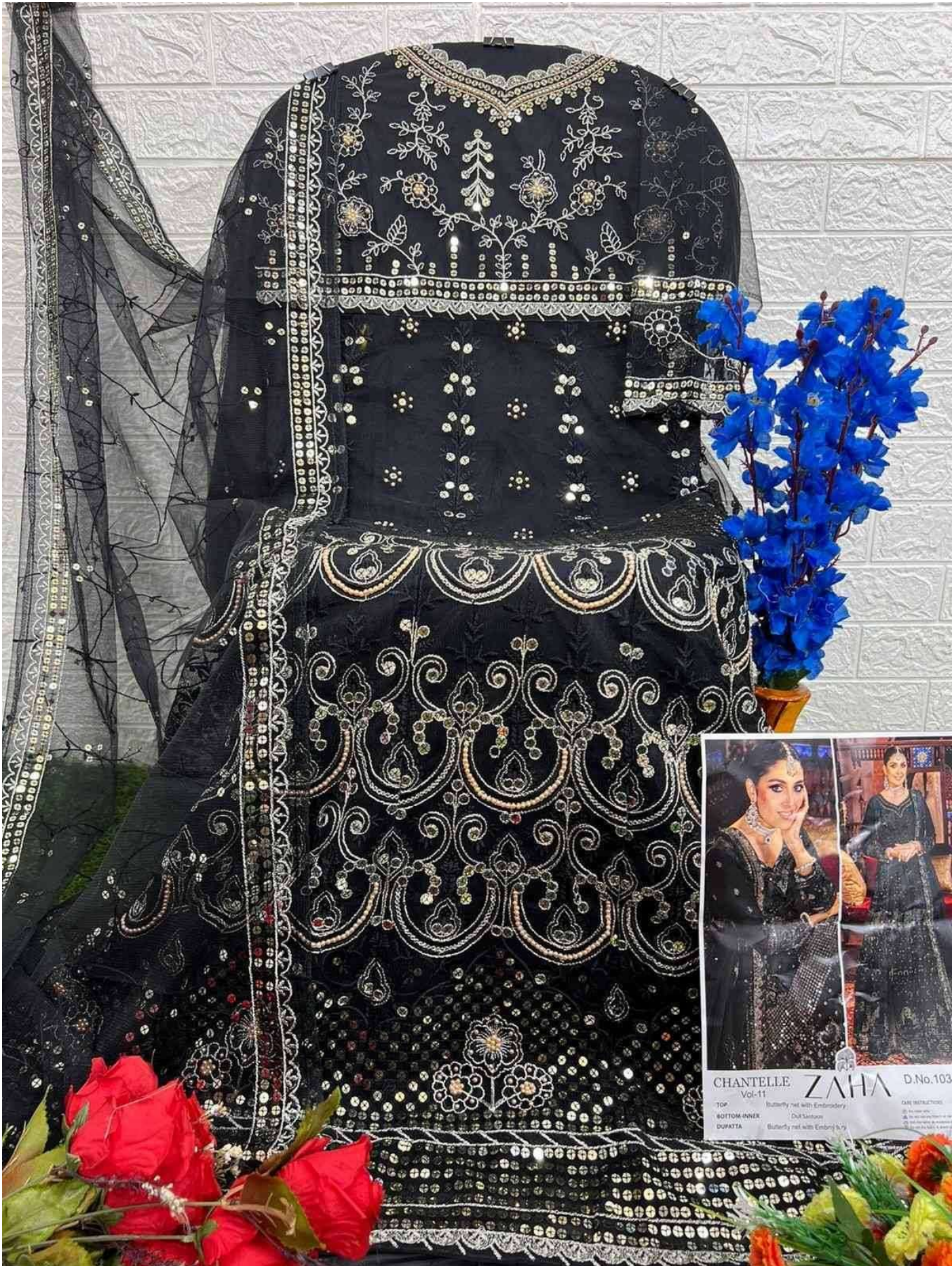


ZAHA

Dull santoon **DUPATTA** Butterfly Net with Embroidery

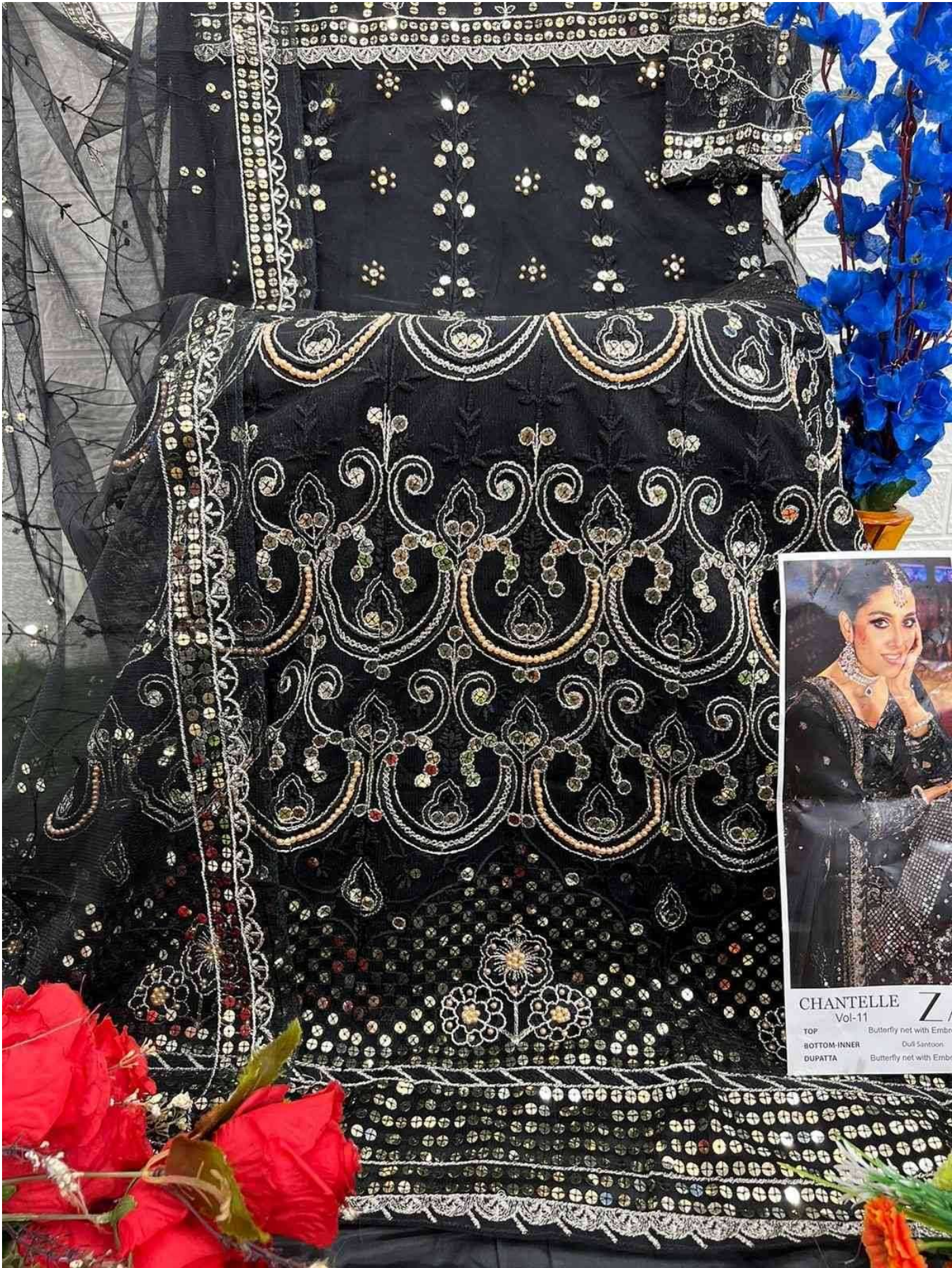


10359-B



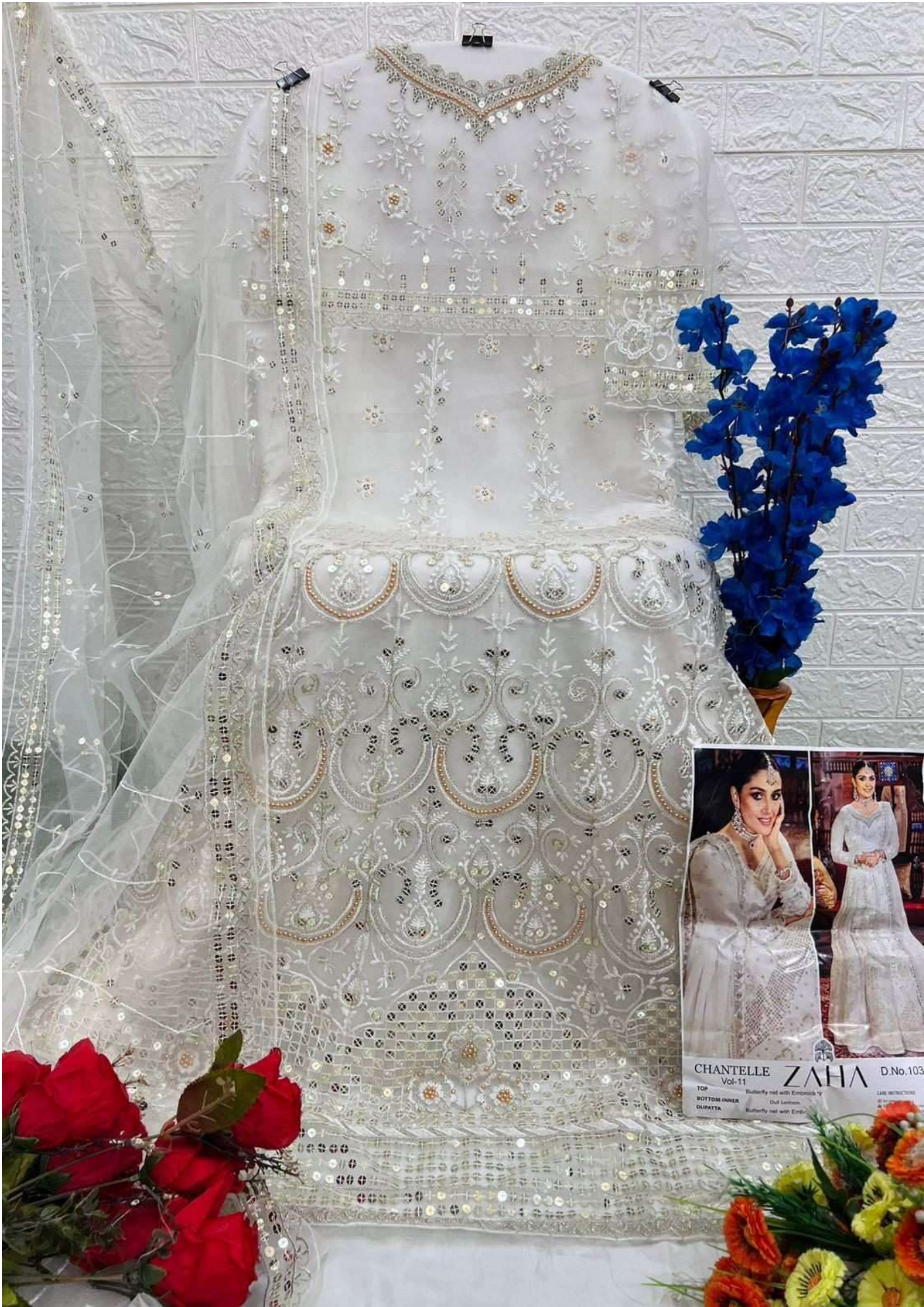
CHANTELE ZAHA D.No.103
Vol-11

TOP	Butterfly net with Embroidery	CARE INSTRUCTIONS: • Do not wash • Do not iron • Do not dry clean
BOTTOM INNER	Duit Sansoon	
DUPATTA	Butterfly net with Embroidery	



CHANTELLE Z
Vol-11

TOP	Butterfly net with Embro
BOTTOM-INNER	Dull Santoon
DUPATTA	Butterfly net with Embro



CHANTELLE Vol-11 **ZAHA** D.No.103

TOP Butterfly net with Embroidery
BOTTOM INNER Duit Lattice
DUPATTA Butterfly net with Embroidery

CARE INSTRUCTIONS