



Beautiful U
blend

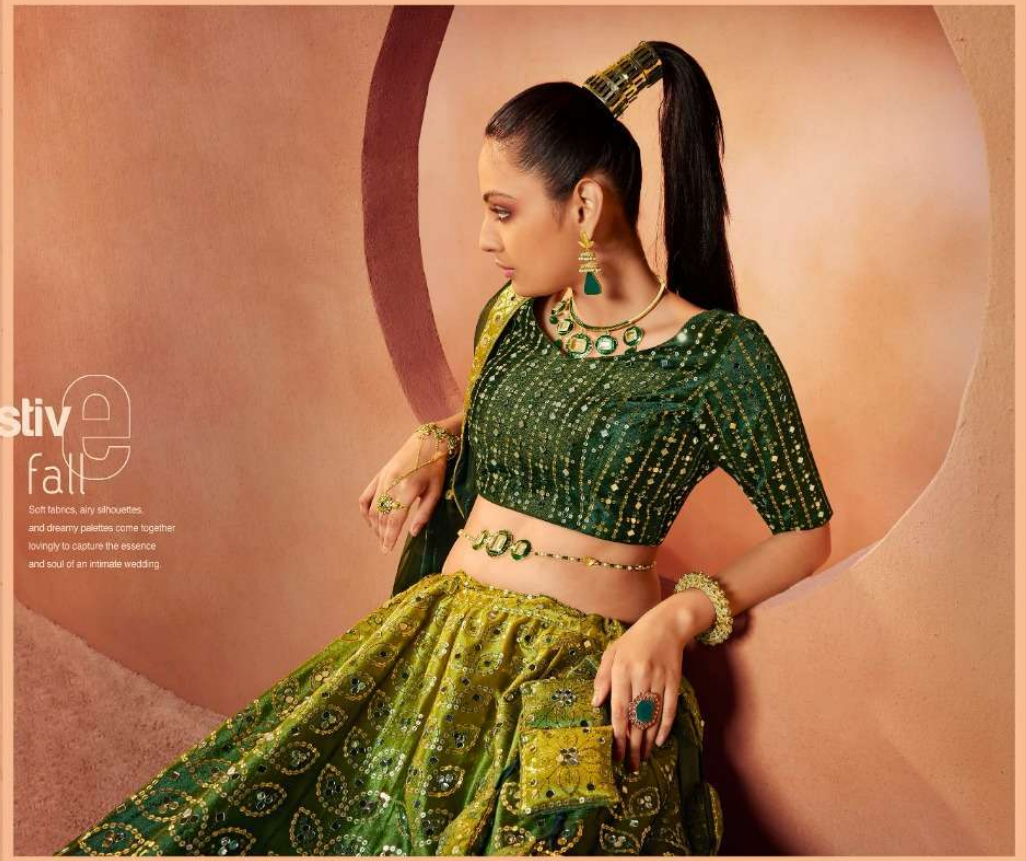
A design that
promises new-age glam with
just the right amount of bling!

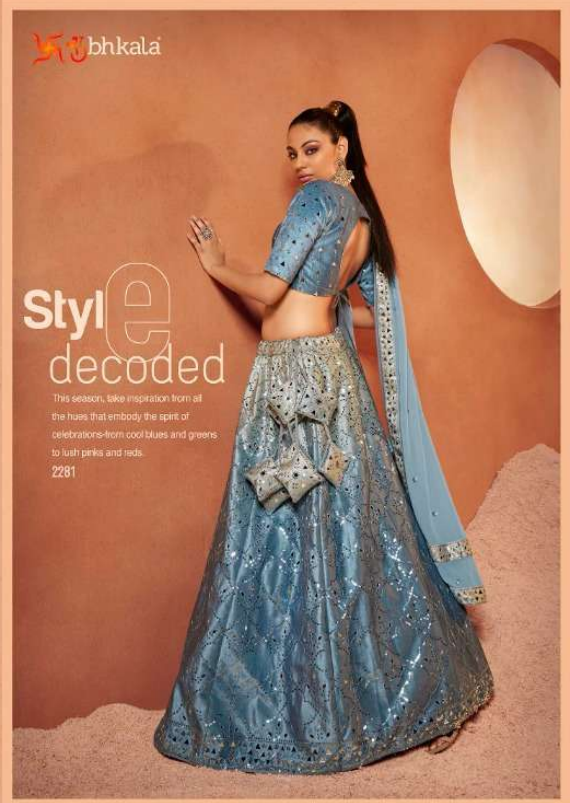
2284

 bhkala

Festive fall

Soft fabrics, airy silhouettes,
and dreamy palettes come together
lovingly to capture the essence
and soul of an intimate wedding.





bhkala

Style e decoded

This season, take inspiration from all the hues that embody the spirit of celebrations—from cool blues and greens to lush pinks and reds.

2281

 bhk kala

Style decoded

This season, take inspiration from all the hues that embody the spirit of celebrations from cool blues and greens, to lush pinks and reds.

2281



bhkala



Style decoded

This season, take inspiration from all the hues that embody the spirit of celebrations—from cool blues and greens to lush pinks and reds.

2281



A close-up photograph of the same woman in the pink and gold lehenga set. She is looking towards the camera with a slight smile. Her hair is styled in a high bun with a gold ornament. She is wearing large, ornate earrings and a necklace. The background is a warm, textured wall with a circular archway.

bhkala

**Soothing
Feel**

Classy, subtle and totally regal,
lush pink is the colour that
perfectly complements
the new Indian bride, who oozes
oodles of exuberance.

2282



Soothing Feel

Crisp, subtle and totally regal
lush pink is the colour that
perfectly complements
the new Indian bride, who oozes
coolest of poise and grace
2282



bhkala

ModerN classics

In classic hues,
Opulent silhouettes,
And decadent spirit,
Transform yourself into
the timeless bride.
2283



ModerN classics

In classic hues,
Opulent silhouettes,
And decadent spirit,
Transform yourself into
the timeless bride.

2283

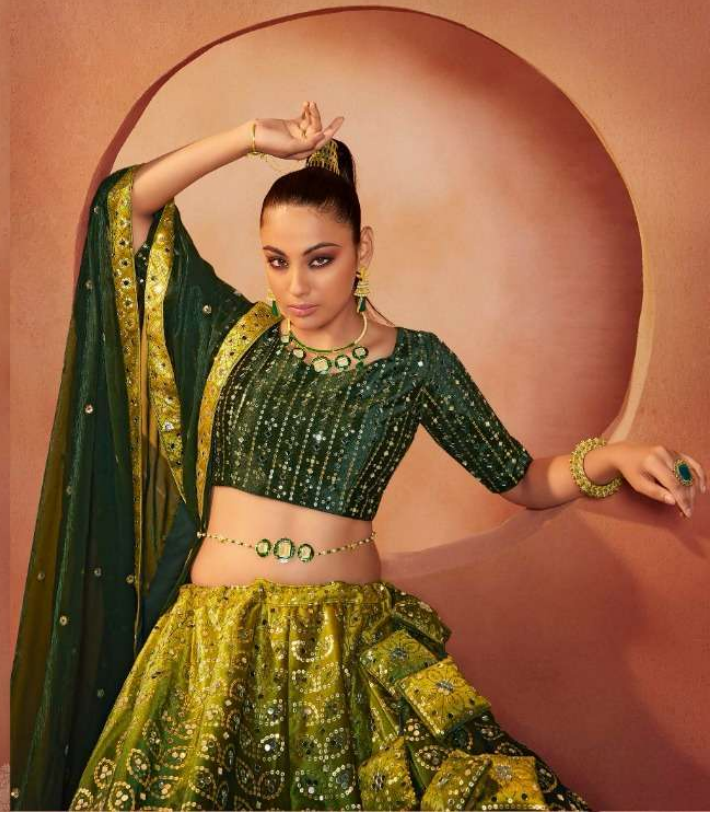


bhkala



Beautiful blend

A design that
promises new-age glam with
just the right amount of bling!
2284



Beautiful blend

A design that
promises new-age glam with
just the right amount of bling!
2284



Royal Romance

Every woman in this world wears a little sparkle, some in their dress, and some in their eyes. This dreamy lehenga is embellished with beautiful work.

2285





2281



2282



2283



2284



2285

Shikha

Bride & maid
VOL-29



Royal Romance

Every woman in this world wears a little sparkle, some in their dress, and some in their eyes. This divine lehenga is embellished with beautiful work.
2285



bhkala



Bride & Maid

VOL-29



Design NO. (SKU)	Main Color	Lehenga Fabric	Choli Fabric	Dupatta Fabric	Size (Semi-Stitched)	Lehenga Work	Choli Work	Dupatta Work	Choli Length MTR	Lehenga Length MTR	Dupatta Length MTR	Weight
2281	Dusty Pink	Velvet	Velvet	Georgette	UPTO 42 BUST AND WAIST	Sequince Embroidered With All Over Mirror Work	Sequince Embroidered With All Over Mirror Work	Sequince Embroidered With All Over Mirror Work	0.80 MTR	42 INCH	2.40 MTR	2.5 KG
2282	Magenta	Velvet	Velvet	Art Silk	UPTO 42 BUST AND WAIST	Sequince Embroidered With All Over Mirror Work	Sequince Embroidered With All Over Mirror Work	Sequince Embroidered With All Over Mirror Work	0.80 MTR	42 INCH	2.30 MTR	2.5 KG
2283	Teal Blue	Velvet	Velvet	Georgette	UPTO 42 BUST AND WAIST	Sequince Embroidered With All Over Mirror Work	Sequince Embroidered With All Over Mirror Work	Sequince Embroidered With All Over Mirror Work	0.80 MTR	42 INCH	2.40 MTR	2.5 KG
2284	Green	Velvet	Velvet	Art Silk	UPTO 42 BUST AND WAIST	Sequince Embroidered With All Over Mirror Work	Sequince Embroidered With All Over Mirror Work	Sequince Embroidered With All Over Mirror Work	0.80 MTR	42 INCH	2.40 MTR	2.5 KG
2285	Purple	Velvet	Velvet	Art Silk	UPTO 42 BUST AND WAIST	Sequince Embroidered With All Over Mirror Work	Sequince Embroidered With All Over Mirror Work	Sequince Embroidered With All Over Mirror Work	0.80 MTR	42 INCH	2.40 MTR	2.5 KG

THIS BOOK / CATALOGUE / LOGO / ARE PROTECTED UNDER COPYRIGHT ACT.
 AN INLEGAL/UNAUTHORIZED REPRINT, PUBLISHING, REPRODUCTION, DISTRIBUTION AND MODIFICATION OF ANY IMAGES, PHOTOGRAPHS AND PRODUTCS,
 TOTALLY OR IN PART, FOR ANY PURPOSE, REASON OR CAUSE IS STRICTLY PROHIBITED AND PUNISHABLE UNDER LAW.