



FASHIONS FADE, STYLE IS ETERNAL  
23519

FABRIC: TWO TONE GEORGETTE SILK



FABRIC: PURE CREPE GEORGETTE

In this saree, fusion of style and impression leaves a lasting mark.

*The fervent allure of  
rich brown shades.*



Fabric and elegance fuse, leaving a lasting impression in your style.



FASHIONS MADE, STYLE IS ETERNAL  
23519


FABRIC: TWO TONE GEORGETTE SILK





FASHIONS FADE, STYLE IS ETERNAL  
23519

FABRIC: TWO TONE GEORGETTE SILK



A SIGN

# *Fashion*

We're a story with a life and its making journey in fashion with you.

FABRIC: CREPE SILK GEORGETTE



*Discovering majestic*  
charm in the red

Join the timeless craftsmanship and style evolution with the red.



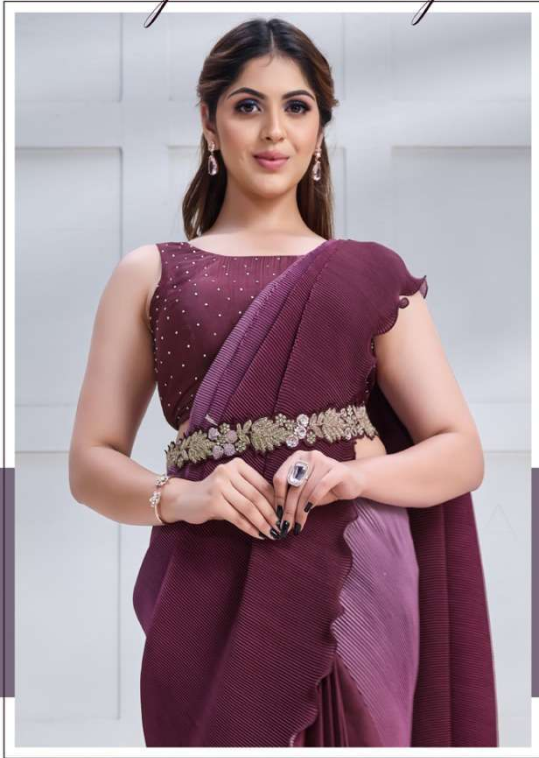
FASHIONS FADE, STYLE IS ETERNAL  
23512

FABRIC: CREPE SILK GEORGETTE





GET WRAPPED IN  
*Majestic Beauty*



THIS  
WINE-COL-  
ORED SAREE  
WITH A HINT  
OF LIGHT  
PURPLE  
EXUDES  
GRACE AND  
CHARISMA.

FASHIONS FADE, STYLE IS ETERNAL  
23508

FABRIC: CREPE SATIN SILK





DESIGN NO	SAREE FABRIC	BLOUSE FABRIC	Saree WORK	Blouse Work	Belt	CUSTZ.(SEMISTITCH/UN-STITCH)	BLOUSE SIZE
23508	Crepe satin silk	Satin Silk	Texture with Cord & Sequence Embroidered and Stone work	Cord & Sequence Embroidered and Stone work	Available	stitched Blouse	up to 38 Inch with margin of 42 Inch
23512	Crepe Silk Georgette	Net	Texture with Cord, Sequence Embroidered & Stone work	Cord, Sequence Embroidered	Available	stitched Blouse	up to 38 Inch with margin of 42 Inch
23519	Two Tone Georgette Silk	Malai Satin	Sequence Embroidered with Stone work	Sequence Embroidered with Stone work	NA	UN-stitched Blouse	0.80 mtr
23520	Pure Crepe Georgette	Banglari Silk	Cord & Sequence Embroidered with Stone work	Cord & Sequence Embroidered with Stone work	NA	UN-stitched Blouse	0.80 mtr

*When Style Meets Impression:*  
A Beautiful Fusion.

Step into a world where style and impression fuse beauty harmoniously.



FASHIONS FADE, STYLE IS ETERNAL  
23520

FABRIC: PURE CREPE GEORGETTE