

A woman with long dark hair is standing in a light purple two-piece outfit. The top is a button-down shirt with ruffled sleeves and a decorative fringe-like detail on the chest. The pants are straight-leg with a small detail on the side. She is wearing high-heeled sandals. The background is a large, detailed image of the Earth from space, set against a dark background. The ground appears to be a grey, rocky surface.

NU
PROGRESSIVELY INDIAN

4705



4701



4702



4703



4704



4705



4706



4707

PN
PROGRESSIVELY INDIAN

4706



PN
PROGRESSIVELY INDIAN

4706





NU
PROGRESSIVELY INDIAN
4707



NU
PROGRESSIVELY INDIAN
4707

PROGRESSIVELY INDIAN
4706



PROGRESSIVELY INDIAN
4706





PROGRESSIVELY INDIAN
4705

PROGRESSIVELY INDIAN
4705



PN
PROGRESSIVELY INDIAN
4704



PN
PROGRESSIVELY INDIAN
4704





PROGRESSIVELY INDIAN
4704



PROGRESSIVELY INDIAN
4704





PN
PROGRESSIVELY INDIAN



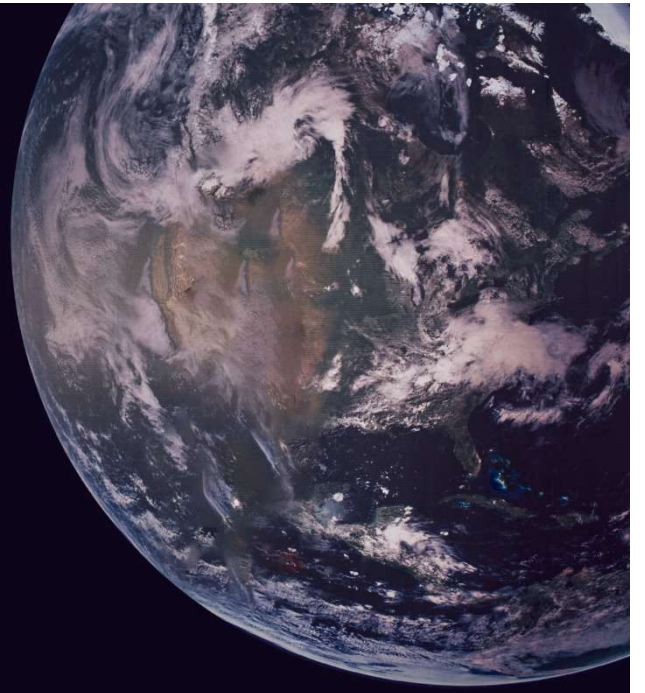


PROGRESSIVELY INDIAN
4701





PN
PROGRESSIVELY INDIAN



AN EXCLUSIVE RUNWAY COLLECTIONS FOR YOUR
WHOLE NEW GLAMOROUS LOOK.